

DP200 Series(B Type)

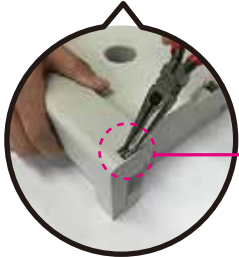
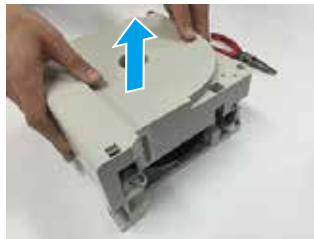
Cartridge Filament Disentanglement

料丝缠丝问题解决

카트리지 필라멘트 풀기

- Refer to the Refill Manual(B type) for opening the Cartridge.
- 请参阅补充说明书 (B型) 打开料盒。
- 카트리지 분해 방법은 리필 설명서 (B 유형)를 참조하십시오.

1 Disassembling the Hook/打开卡扣/후크 분해

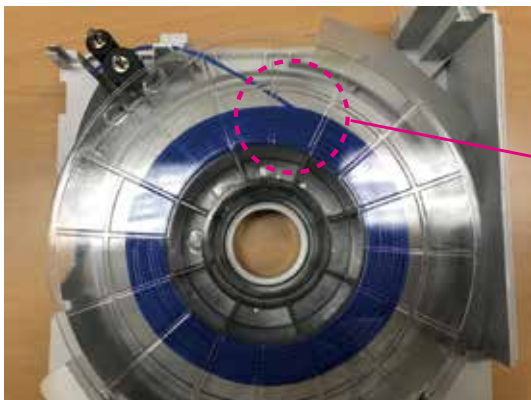


Disassemble 4EA Hooks
打开4处卡扣
4개소 후크 분해

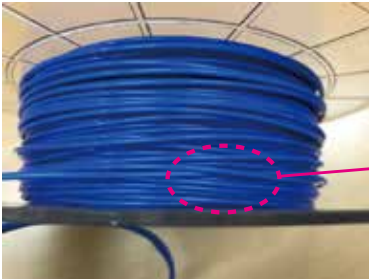


SmartChip
position
芯片位置
스마트칩 위치

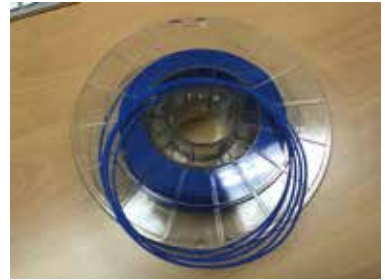
2 Check for filament entanglement/检查缠丝/필라멘트 얽힘 확인



3 Disentangle and rewind the Filament/打开缠丝并重新缠绕/필라멘트 풀어서 되감기



Disentangle the Filament.
解开细丝。
필라멘트 풀기.

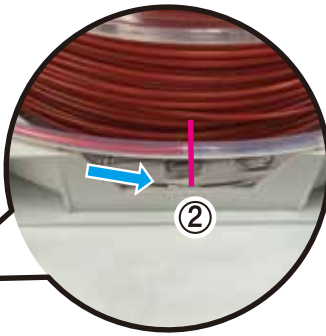
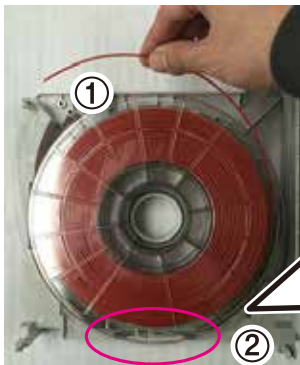


Rewind the filament.
重绕灯丝。
필라멘트 되감기.

Make sure that the end tip of the filament does not go back inside. This may result in another entanglement.
确保料丝的末端没有被缠绕到里面，否则会导致新的缠丝发生。

필라멘트의 끝이 안쪽으로 들어가지 않도록 할것. 이로 인해 또 다른 얽힘이 생길 수 있음.

4 Filament Reassembly/料丝重新装入/필라멘트 재조립



Push the filament that is in the tube until it reaches the marked section as shown in the image(②).

请将软管内的料丝推送至位置(②)

튜브 속 필라멘트를 해당 부분까지 밀어 넣을 것(②).

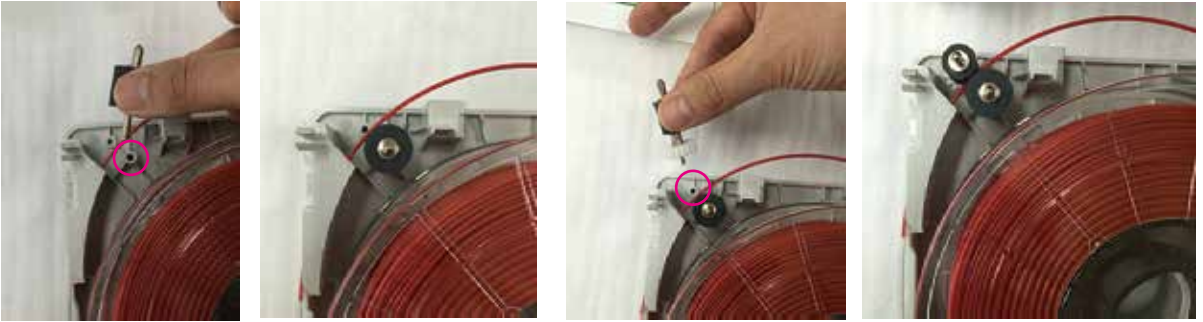


Place the filament into the appropriate entrance.
将料丝穿入图示方形孔。
필라멘트를 해당 구멍에 넣을 것.

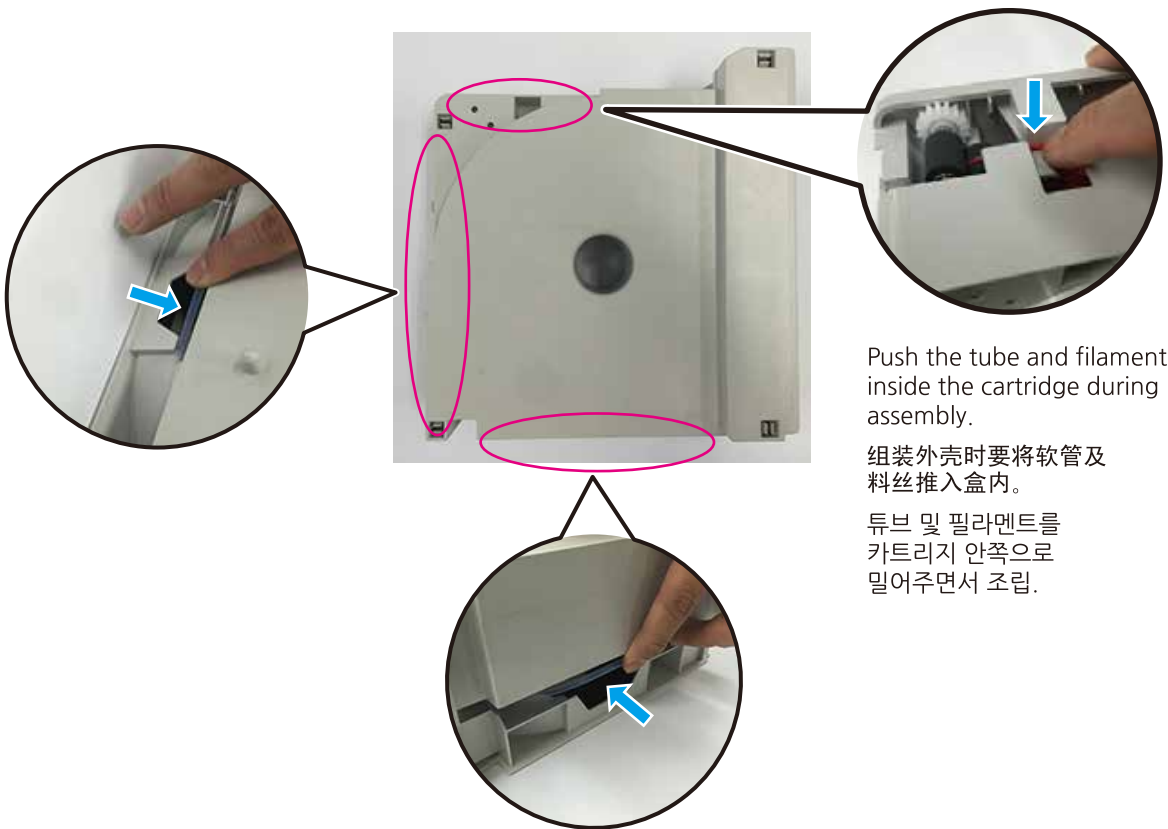
Place the filament into the tube.
将料丝插入软管中。
튜브에 필라멘트를 넣을 것.

Assembled image
组装效果图
조립된 그림

5 Assembling the Rubber Rollers/组装橡胶辊/고무 롤러 조립



6 Assembling the Cover/组装外壳/커버 조립



Push the tube and filament inside the cartridge during assembly.

组装外壳时要将软管及料丝推入盒内。

튜브 및 필라멘트를 카트리지 안쪽으로 밀어주면서 조립.